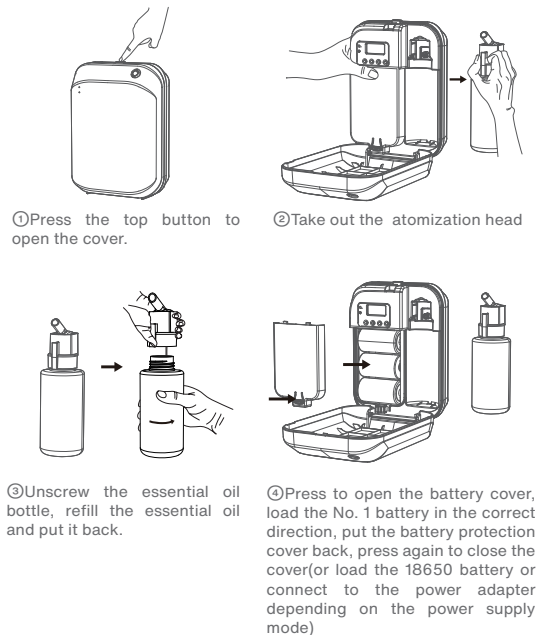


Please read carefully before use and keep it properly.

We supply warranty within 12 months after purchase date for all qualified machines.

◇ Operation



Wall-mounted: First fix the wall-mounted backplate to the wall, and then hang the device on the backplane hole along the screw position.

◇ Power supply mode

DC power supply (Type-C interface) / No. 1 dry battery / 18650 battery, DC power supply first.

Note: Do not charge the No. 1 dry battery, you can only charge the 18650 battery, charging start when connected to the power supply.

◇ Packing

Scent diffuser x1, Type-C power cord x1(optional), 18650 batteryx2 (optional), No. 1 battery x3 (optional), bottle x1, atomization core x1, wall backplate x1, user manual x1.

◇ Button & light

① MODE: Mode setting button(Long press the button for 10 seconds to restore the factory settings).

② SET: Set the clock and day of the week.

③ UP: Increase

④ DOWN: Reduce(Press and hold the DOWN button for 2 seconds when it is showing home screen, the device enters or wakes from sleep mode; Cut the power to restart the machine can also turn off the sleep mode)

⑤ Bluetooth: When Bluetooth is connected, the blue light flashes rapidly. After the Bluetooth connection is completed, the blue light flashes every 3 seconds when the air pump is paused, and the blue light is off after quitting the APP

When the air pump is working, the green light flashes (if the battery level is less than 10%, the red light flashes); When the air pump is paused, the green light is always on (different power supply, such as 18650 battery or No. 1 battery, the color of light and flashing mode are slightly different).

⑥ When the air pump is working, the light color is as follows:

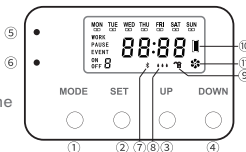
Essential Oil Level	50~100%	20~50%	0<20%
Light	Green	Blue	Red(flash)

When the air pump is paused, the corresponding essential oil light flashes every 3 seconds.

⑦ Bluetooth sign: Display Bluetooth connection status, not displayed when there is no Bluetooth connection

⑧ Essential oil sign:

When the amount of essential oil is 100~50%, three signs are



displayed. When the amount of essential oil is 50%~20%, two signs is displayed. When less than 20%, only one sign flashes.

⑨ Lock/unlock(long press "SET" button for 5 seconds: lock/unlock button control)

⑩ Battery power flag: display the battery level, flashes when power is low

⑪ Air pump working status sign: The air pump rotates continuously when working, and it is not displayed when the air pump stops

◇ System time setting

Press the SET button to select the hour and minute of the current time zone time, and then press UP to increase the setting value or press DOWN to decrease the setting value. After setting the clock, press SET to move to the day of the week in the upper part of the LCD display area, press UP or DOWN to select the date .

◇ Set the working periods (5 modes in total)

A Power-on time setting: Press the MODE button to enter the setting, and then press the SET button to move to select hour or minute, then press UP or DOWN to select the power-on time you need. After setting the power-on time, press the SET button to move to the upper part of the LCD display area Weekly arrangement, press UP or DOWN to select the work cycle combination you need.

B The shutdown time setting refers to the first section of the startup time setting method. The week combination setting automatically follows the startup time setting. There is no need to set it again. After setting, press MODE to enter the next step.

Note:

① Running time settings, the shutdown time can not precede the start time;

② If the running time needs to span 00:00, set two time periods, such as the first time period 08:00-23:58, the second time period 00:02-06:00.

C Spray duration and pause duration(working frequency) setting: After setting the shutdown time, press the MODE button to enter the spray time duration setting, press UP and DOWN to select the value, the spray time can be arbitrarily set to: 3~8 seconds; then press MODE, to set the spray pause time, the spray time can be arbitrarily set to: 90~600 seconds. So far, the first working mode is set. You need to set other groups to work in accordance with the first group method. If you don't set it, press the MODE button to return to the main page, settings are saved.

This device works with USB power supply and battery power supply. USB power supply is DC power supply USB-TYPE-C/5V/1.5A.

The dry battery is a standard No. 1 battery, voltage 1.5V, 3 No. 1 dry batteries in series power supply (non-rechargeable battery).
It is recommended to choose a big brand for dry battery selection, and the battery life is more guaranteed.

◆ Product Parameter

Power supply mode	18650 battery	No. 1 dry battery	Type-C
• Weight	0.45Kg	0.46Kg	0.47Kg
• Voltage	4.2V	4.5V	5V
• Power	1.5W	1.5W	1.9W

- Size: 137×66×182mm
- Capacity: 150ml
- Coverage: 300m³

◆ Equipment maintenance

If the diffuser is not used for a long time, 95% industrial alcohol should be added into the refilled oil bottle to clean the nozzle and other parts inside the diffuser. Tip: Maintain the diffuser with 95% industrial alcohol at least every 1-2 months.

Specific operation: add 95% industrial alcohol into the empty bottle, turn on the diffuser and run it for 10-15 minutes after, then turn off the diffuser and pour the alcohol, then screw back the bottle to machine.

◆ Warranty

1.The Warranty is suitable for new machine but not reselled or second hand products.

2.Within 12 months after purchase date, Warranty is offered for all qualified machines. During warranty, we will offer repair services and the free parts but not include essential oil.

3.The warranty card & purchase Invoice are needed if after-sales service is required. Please contact us within warranty if any problems.

4.The following is not suitable for free warranty service:

- ① Damage & problems caused by Accidents & Fire.
- ② Not used properly and wrong operation.
- ③ Repaired by the unprofessional and cause some parts damaged.
- ④ Damaged during transportation.
- ⑤ Without our warranty card.
- ⑥ Without proper cleaning for a long time
- ⑦ The machine work time out.
- ⑧ Machines & Parts not from us.
- ⑨ Machines not purchased from official sales channels.
- ⑩ Send the machines back without permit from manufacturer.

◆ Notice

1. Please carefully read the Instruction before installation, and keep the User manual to check if need at anytime

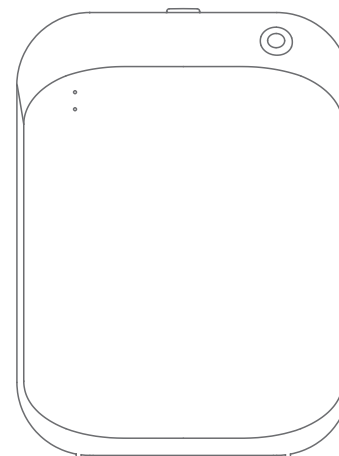
2. The machine should always stay upright, do not tilt the diffuser as oil can spill inside the device and damage it.

3. Please do not use the broken power wire and make sure the power supply is suitable for the machine, or may cause fire.

4. Please do not open the machine by yourself, If problems, please contact us promptly!

SMART SCENT DIFFUSER

◆
USER MANUAL



Please read the manual carefully and keep it properly before use